

INDIVIDUAL SPECIFICATION SHEET

Product Name: Transient Voltage Suppressors

Part Number: SM6SxxA Series

Revision: A



Dongguan TLC Electronic Technology Co., LTD

No.18,5th GaoLi Road,TangXia Town,DongGuan,GuangDong,P.R China 523710

TEL: 86-0769-3892 0511

FAX: 86-0769-8793 2077

Http: www.tlcet.com.cn

Rev.	Effective Date	Changed Contents
A	2018-11-29	New Release

The individual specification sheet are the property of Dongguan TLC electronic technology Co.,Ltd and shall not be copied or used as commercial purposes without permission.

PREPEARED BY

APPROVED BY

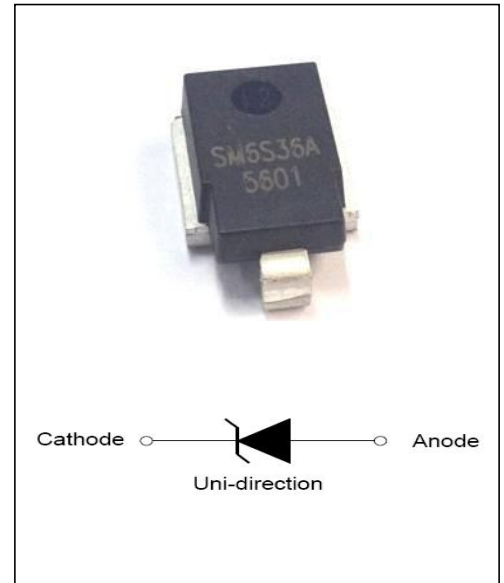


DESCRIPTION:

SM6S Series TVS diodes can be used in sensitive electronics protection against voltage transients induced by inductive load switching and lighting, especially for automotive load dump protection application.

FEATURES:

- ✧ Available in uni/bi-directional polarity.
- ✧ Low forward voltage drop & Low leakage current.
- ✧ High surge capability.
- ✧ Junction passivation optimized design passivated anisotropic rectifier technology.
- ✧ $T_J = 175\text{ }^\circ\text{C}$ capability suitable for high reliability and automotive requirement.
- ✧ Meets ISO7637-2 surge specification (varied by test condition).
- ✧ Meets MSL level 1, per J-STD-020, LF maximum peak of $245\text{ }^\circ\text{C}$.
- ✧ AEC-Q101 qualified.
- ✧ Compliant to ROHS Directive 2002/95/EC and in accordance to WEEE 2002/96/EC



ABSOLUTE MAXIMUM RATINGS ($T_A=25\text{ }^\circ\text{C}$, RH=45%-75%, unless otherwise noted)

Parameter	Symbol	Value	Unit
Peak pulse power dissipation on 10/1000us waveform	P_{pp}	4600	Watts
Peak pulse power dissipation on 10/10000us waveform		3600	Watts
Peak pulse current with 10/1000us waveform	I_{pp}	See next table	Amps
Power dissipation on infinite heat Sink at $T_C=25\text{ }^\circ\text{C}$	P_D	6.0	Watts
Peak forward surge current, 8.3ms single half sine-wave	I_{FSM}	600	Amps
Operating Junction and Storage Temperature Range	T_J, T_{STG}	-55 to +150	$^\circ\text{C}$
Typical thermal resistance, junction to case	$R_{\theta JC}$	0.95	$^\circ\text{C/Watt}$

ELECTRICAL CHARACTERISTICS

Part Number		V _R	I _R @V _R		V _{BR} @ I _T		I _T	V _C @I _{PP}	I _{PP}
Uni-polar	Bi-polar	V	μA@25°C	μA@175°C	min(V)	max (V)	mA	V	A
SM6S10A	--	10.0	5	250	11.1	12.3	5	17.0	271.0
SM6S11A	--	11.0	5	150	12.2	13.5	5	18.2	253.0
SM6S12A	--	12.0	5	150	13.3	14.7	5	19.9	231.0
SM6S13A	--	13.0	5	150	14.4	15.9	5	21.5	214.0
SM6S14A	--	14.0	5	150	15.6	17.2	5	23.2	198.0
SM6S15A	--	15.0	5	150	16.7	18.5	5	24.4	189.0
SM6S16A	--	16.0	5	150	17.8	19.7	5	26.0	177.0
SM6S17A	--	17.0	5	150	18.9	20.9	5	27.6	167.0
SM6S18A	--	18.0	5	150	20.0	22.1	5	29.2	158.0
SM6S20A	--	20.0	5	150	22.2	24.5	5	32.4	142.0
SM6S22A	--	22.0	5	150	24.4	26.9	5	35.5	130.0
SM6S24A	--	24.0	5	150	26.7	29.5	5	38.9	118.0
SM6S26A	--	26.0	5	150	28.9	31.9	5	42.1	109.0
SM6S28A	--	28.0	5	150	31.1	34.4	5	45.4	101.0
SM6S30A	--	30.0	5	150	33.3	36.8	5	48.4	95.0
SM6S33A	--	33.0	5	150	36.7	40.6	5	53.3	86.0
SM6S36A	--	36.0	5	150	40.0	44.2	5	58.1	79.0

Note:

①. For all types maximum VF = 1.9 V at IF = 100 A measured on 8.3 ms single half sine-wave or equivalent square wave, duty cycle = 4 pulses per minute maximum.

②. Surge waveform: 10/1000μs

V_R: Stand-off Voltage -- Maximum voltage that can be applied V_{BR}:
Breakdown Voltage

V_C: Clamping Voltage -- Peak voltage measured across the suppressor at a specified I_{PP}

I_R: Reverse Leakage Current

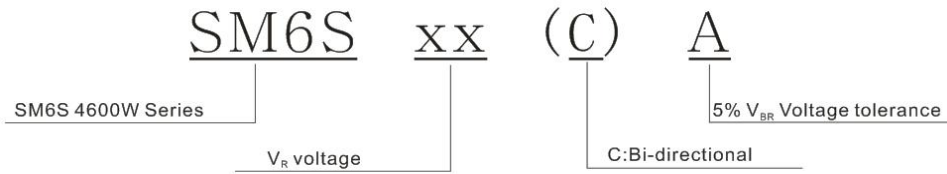
I_T: Test current

Mechanical Data

CASE: DO-218AB Molding compound meets UL 94V-0 flammability rating Base P/NHE3-ROHS-compliant, AEC-Q101 qualified.

Terminals: Matte tin plated leads, solder able per J-STD-002 and JESD22-B102, HE3 suffix meets JESD 201 class 2 whiskertests.

ORDERING INFORMATION



RATINGS AND CHARACTERISTICS CURVES (T_A=25°C, unless otherwise noted)

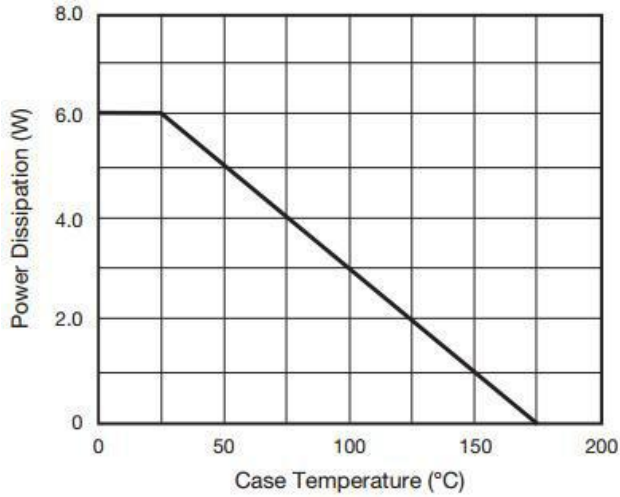


Fig.1 Power Derating Curve

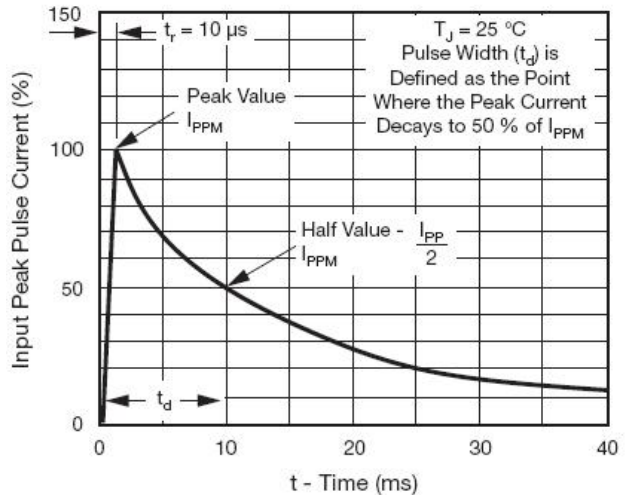


Fig.2 Pulse Waveform

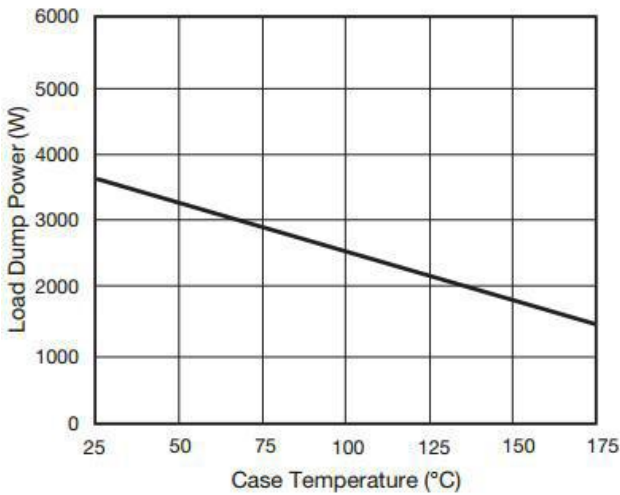


Fig.3 Load Dump Power Characteristics
(10 ms Exponential Waveform)

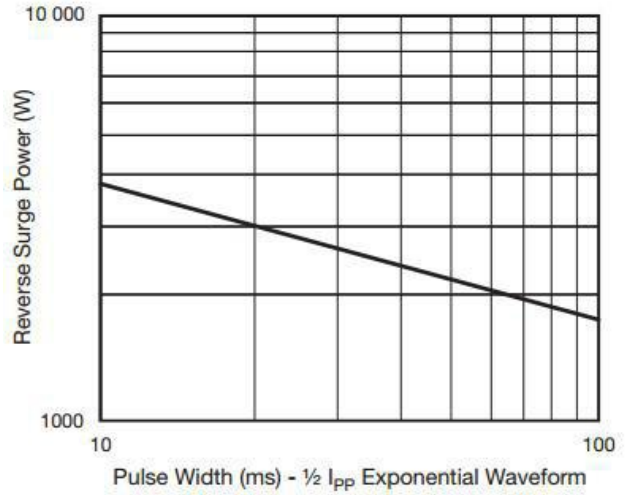


Fig.4 Reverse Power Capability

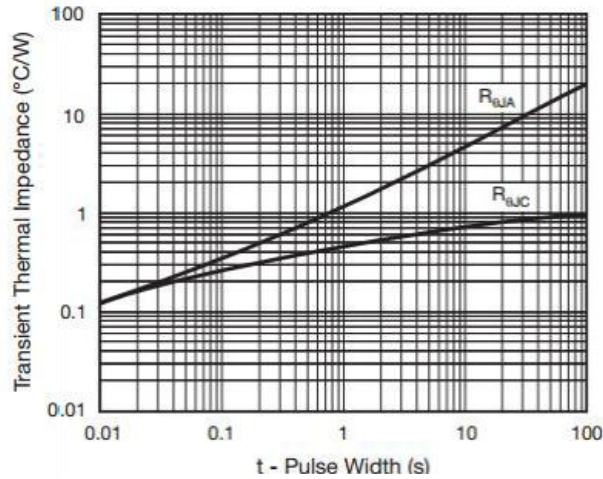
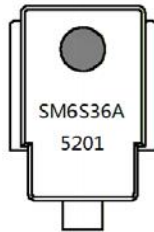


Fig.5 Typical Transient Thermal Impedance

MARKING



SM6S36A: Part Number

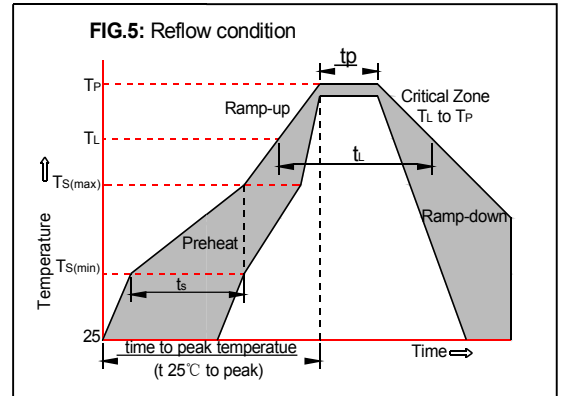
5201: "5"--2015 (year)

"2"--2 (month)

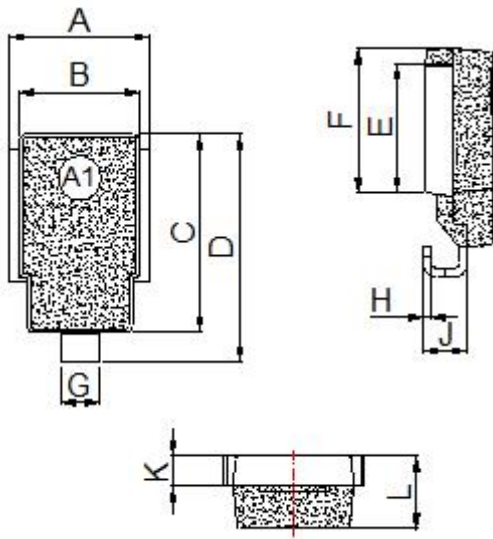
"01"-- (lot)

SOLDERING PARAMETERS

Reflow Condition		Pb-Free assembly (see FIG.5)
Pre Heat	-Temperature Min ($T_{s(min)}$)	+150°C
	-Temperature Max($T_{s(max)}$)	+200°C
	-Time (Min to Max) (t_s)	60-180 secs.
Average ramp up rate (Liquid us Temp (T_L) to peak)		3°C/sec. Max
$T_{s(max)}$ to T_L - Ramp-up Rate		3°C/sec. Max
Reflow	-Temperature(T_L)(Liquid us)	+217°C
	-Temperature(t_L)	60-150 secs.
Peak Temp (T_P)		+260(+0/-5)°C
Time within 5°C of actual Peak Temp (t_p)		30 secs. Max
Ramp-down Rate		6°C/sec. Max
Time 25°C to Peak Temp (T_P)		8 min. Max
Do not exceed		+260°C



PACKAGE MECHANICAL DATA



Dimension	Inches		Millimeters	
	Min	Max	Min	Max
A	0.374	0.413	9.5	10.5
B	0.327	0.342	8.3	8.7
C	0.524	0.539	13.3	13.7
D	0.592	0.628	15.0	16.0
E	0.335	0.358	8.5	9.1
F	0.374	0.398	9.5	10.1
G	0.094	0.118	2.4	3.0
H	0.020	0.028	0.5	0.7
J	0.106	0.146	2.7	3.7
K	0.075	0.083	1.9	2.1
L	0.185	0.201	4.7	5.1